

FEEDBACK ANALYSIS (2021-2022)

In Adhiparasakthi college of arts and science, a standardized and well structured feedback system has been adopted and followed. This system comprises several aspects such as curriculum, teaching- learning-evaluation resources, research and extension activities, infrastructure facilities, student support, student t progression and healthy practices, about which the feedback are collected from the stakeholders of the college such as students, parents, staff, employers and alumni. Feedback form considers not only these aspects, but it also includes several parameters such as skill development and addon courses suitable for industry, laboratory facilities and the welfare of the students.

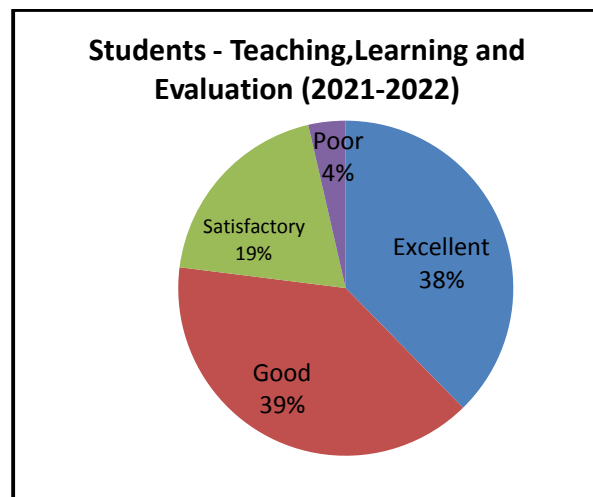
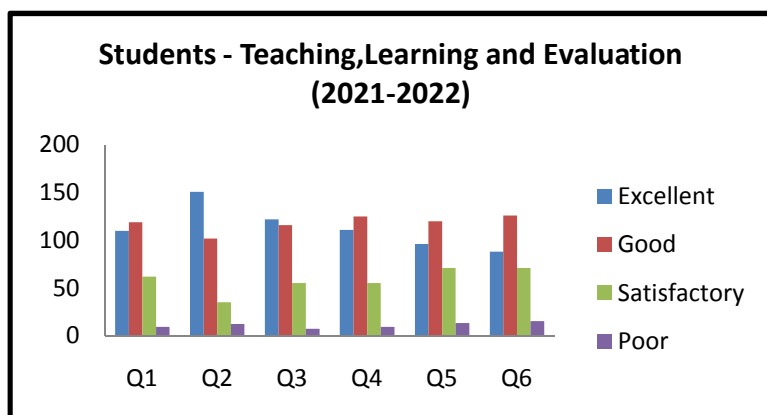
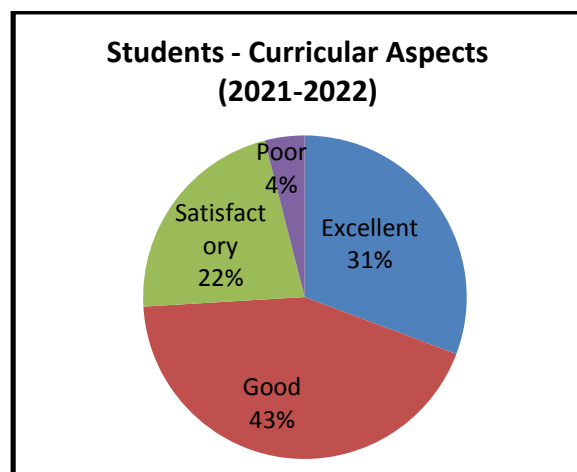
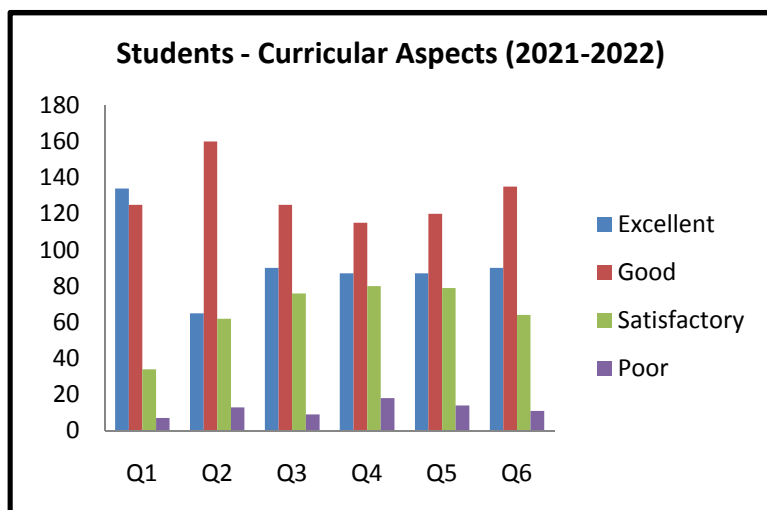
The results are given below

STUDENT	Percentage of responses are given in passage			
	Excellent %	Good %	Satisfaction %	Poor %
Curriculum aspects	31	43	22	04
Teaching, learning and evaluation	38	39	19	04
Research and extensions	41	33	22	04
Infrastructure and facilities	39	34	22	05
Student support	35	39	21	05
Student progression	38	36	21	05
Healthy practices	37	36	22	05
ALUMINI	31	36	24	09
STAFF	41	37	16	03
EMPLOYER	39	41	16	03

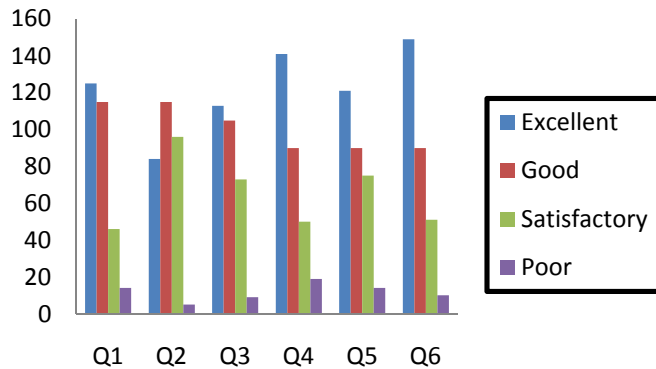
Based on the feedback forms collected from the stakeholders, the responses obtained are discussed with the respective authorities, which enabled them to redress the grievances, and the suggestions received are considered for the improvement of student society. The curriculum

aspects, courses structure and infrastructure facilities are regularly updated drawing inferences and suggestions from different stakeholders such as students' parents, staffs, employers and alumni. Various department and committees reinforce the curriculum by incorporating updated information and social issues for holistic development . Feedback taken from staff, stakeholders and experts regarding industry trends is used to identify new demands of various industries. Feedback obtained from eminent subject experts is used for incorporating new areas in the curriculum/programme. The principal and the management reviewed the problems and the received suggestions and took necessary steps to improve the overall quality of the college.

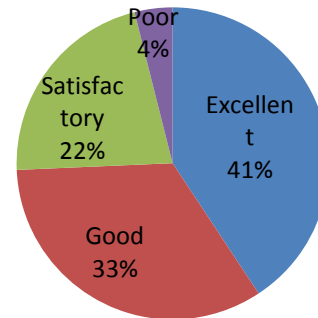
STUDENT FEEDBACK:



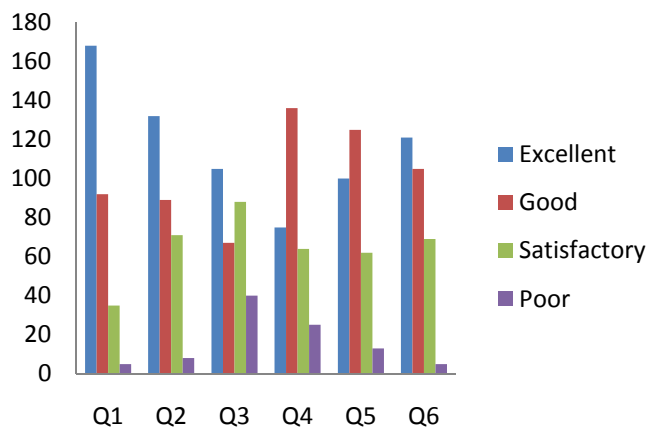
**Students - Research and Extension
(2021-2022)**



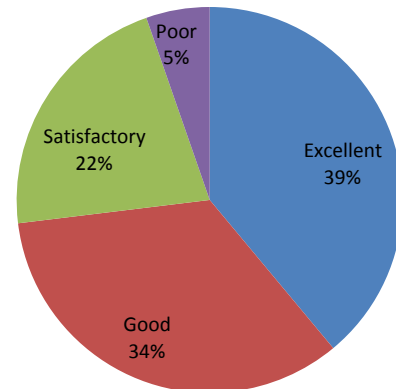
**Students - Research and
Extension (2021-2022)**



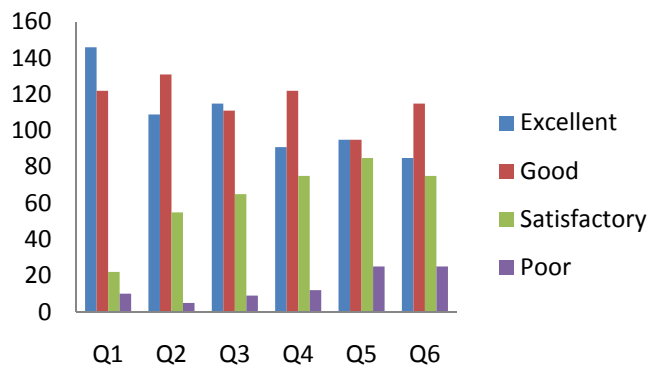
**Students - IV-Infrastructure
Facilities(2021-2022)**



**Students - IV-Infrastructure
Facilities (2021-2022)**



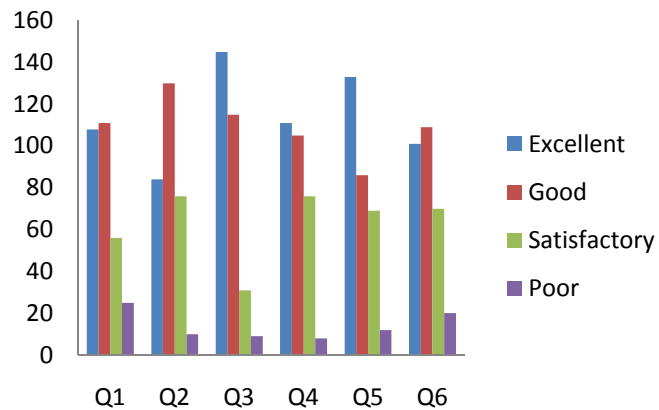
Students - Student Support(2021-2022)



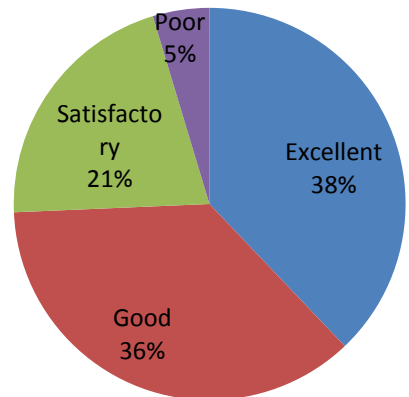
**Students - Student Support(2021-
2022)**



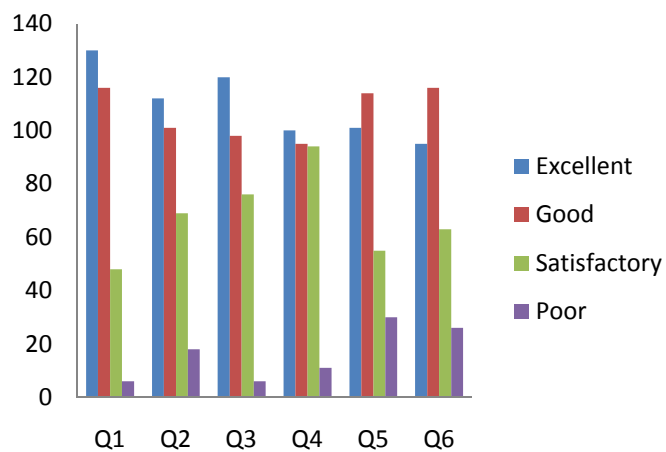
Students - Student Progression(2021-2022)



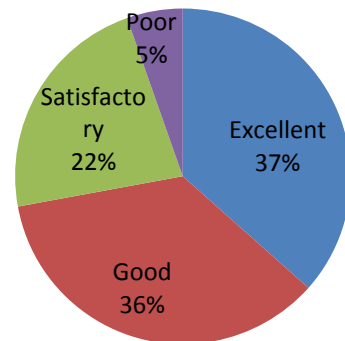
Students - Student Progression(2021-2022)



Students - Healthy Practices(2021-2022)

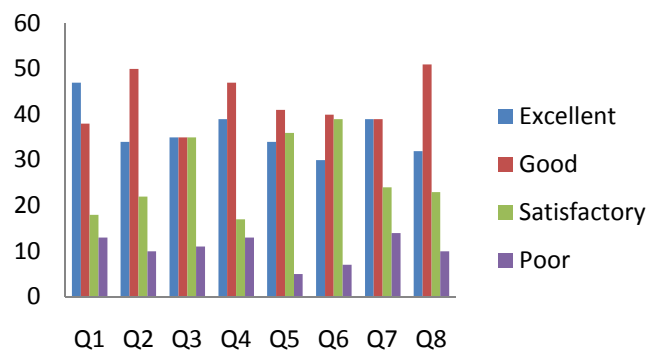


Students - Healthy Practices(2021-2022)

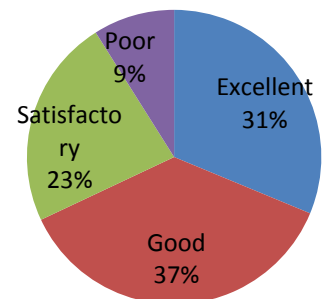


ALUMNI FEEDBACK

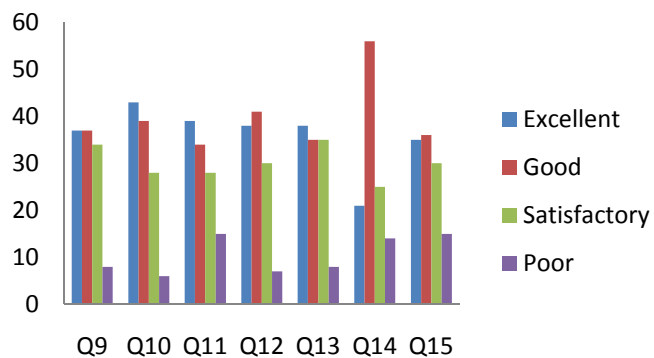
Alumni - Q1 - Q8 (2021-2022)



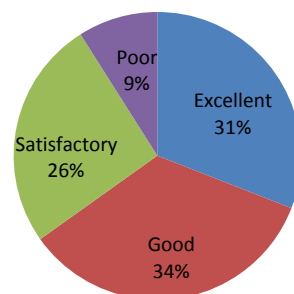
Alumni - Q1 - Q8 (2021-2022)



Alumni - Q9 - Q15 (2021-2022)

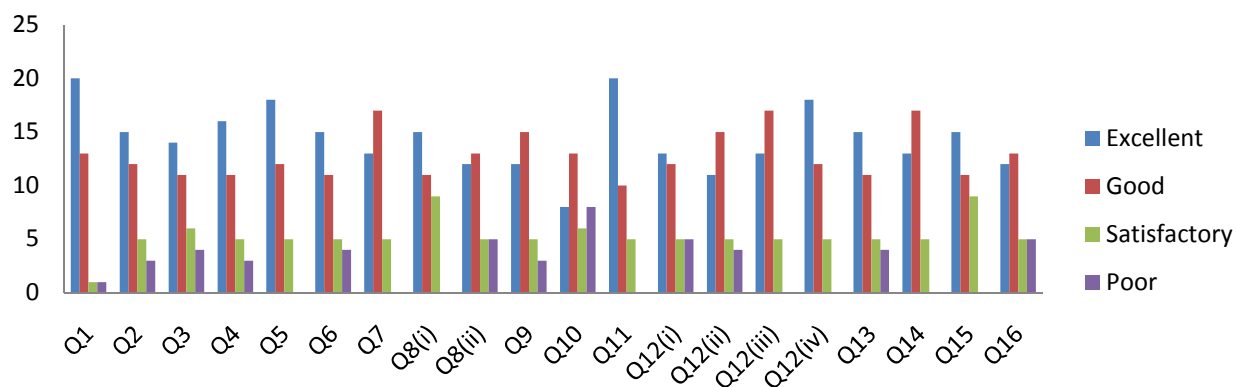


Alumni - Q9 - Q15 (2021-2022)



STAFF FEEDBACK:

Staff 2021-2022



Staff 2021-2022



EMPLOYER FEEDBACK

